

25  
YEARS

DOORS ARE

TOORS

## CUBE 1100N

NEW MOTOR FOR  
TOORS GUARDY



SoftStart  
and SoftStop  
function



Automatic closing  
setting



Opening and  
closing speed  
setting



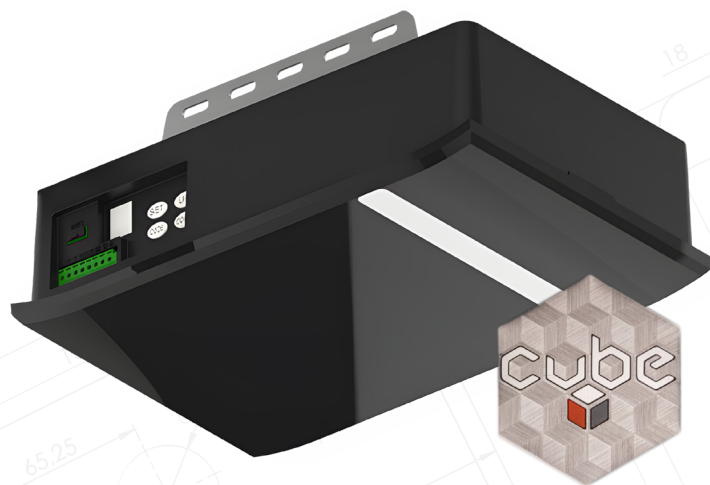
Obstacle detection

## KEY FEATURES

- Max doorleaf area 11 m<sup>2</sup>
- Elegant black cover design
- Transformer overload protection
- Programmable LED Light

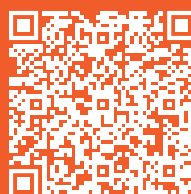
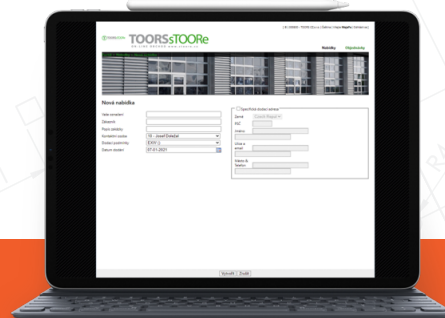


Take a look at our video of the  
motor and its accessories



## Remote control

- Two remote controls included in the basic package
- 868 MHz frequency with floating code



Online door  
configurator  
[www.sTOORe.cz](http://www.sTOORe.cz)

<b>Parameters</b>	CUBE 1100N
Power voltage	230V 50-60 Hz
Max. tractive force	1100 N
Max. doorleaf area	11 m <sup>2</sup>
Max. doorleaf weight	130 kg
Opening/closing speed	180 mm/s
LED light	24V / 15 pcs LED diod
Limit switches	Electronic
Transformer	Overload protection
Radio frequency	868,35 MHz
Coding type	Floating code
Remote with status indicator	Four-channel
Receiver memory capacity	50 remote controls
LED beacon connection	Yes
Working temperature range	-40 °C ~ 60 °C
IP protection	IP20



## TRACK WITH TOOTHED BELT

- Material made of massive galvanized steel
- Enhanced rigidity by profiling
- Easy assembly

Steel track length	Max. doorleaf height
3500 mm	2500 mm
4000 mm	3000 mm

## ACCESSORIES

The motor package includes a complete mounting kit for easy assembly.

